

STUDIO TOUR TRAM PAPER CRAFT BOX

Glamour Tram 1964 - 1983



Bring Universal Studios Hollywood's, World Famous Studio Tour home to enjoy as a fun craft! Create as a historical keepsake, unique gift box or to make your own fun make believe Studio Tour course at home. Attach multiple trams to complete the look of our World Famous Studio Tour!

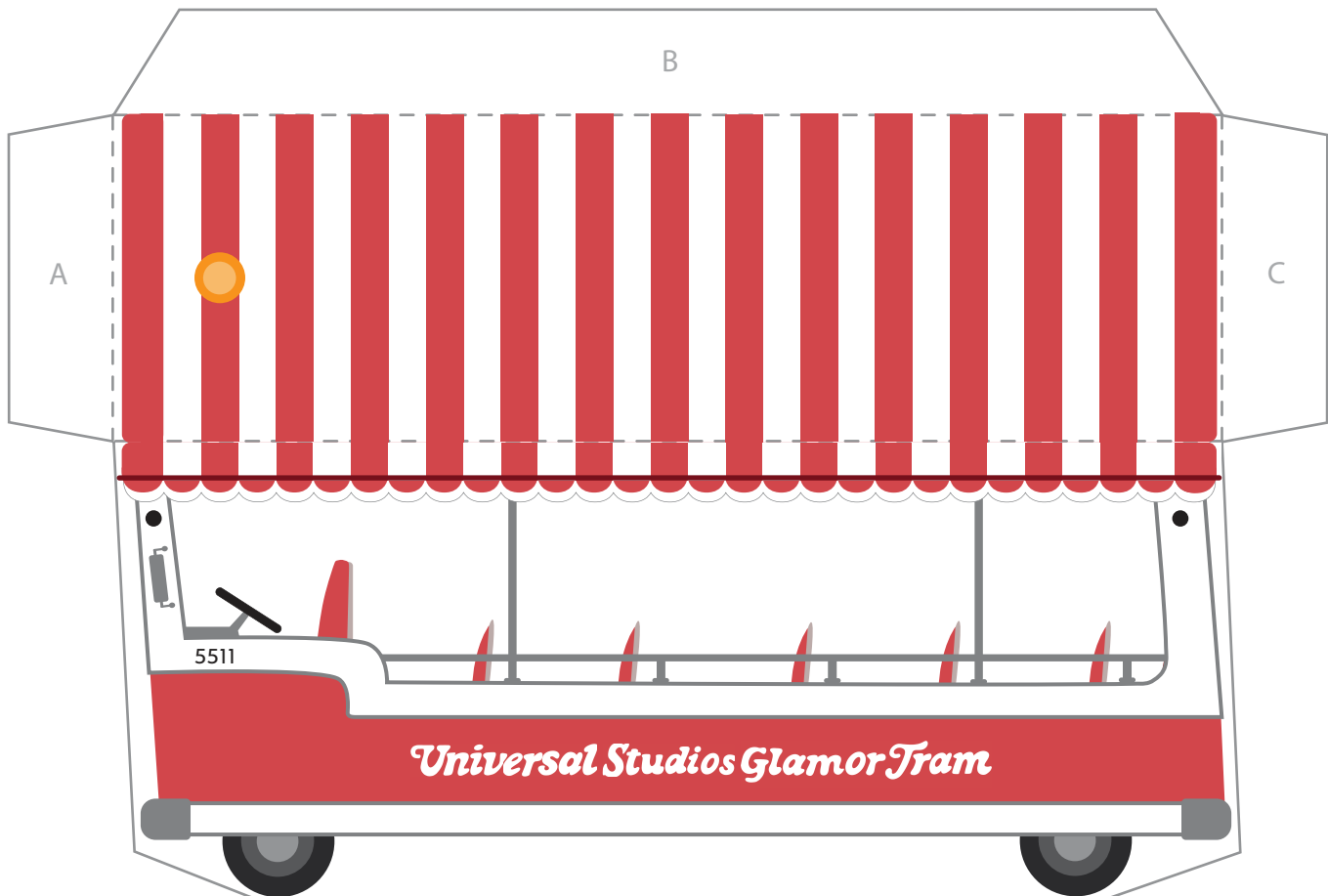
YOU WILL NEED:

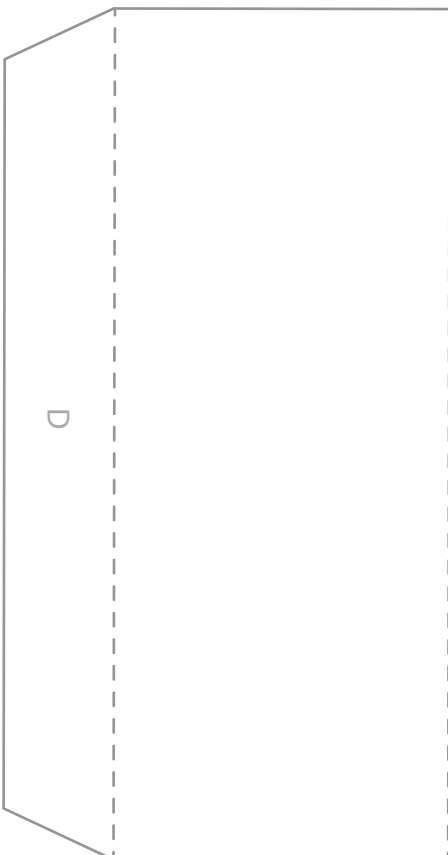
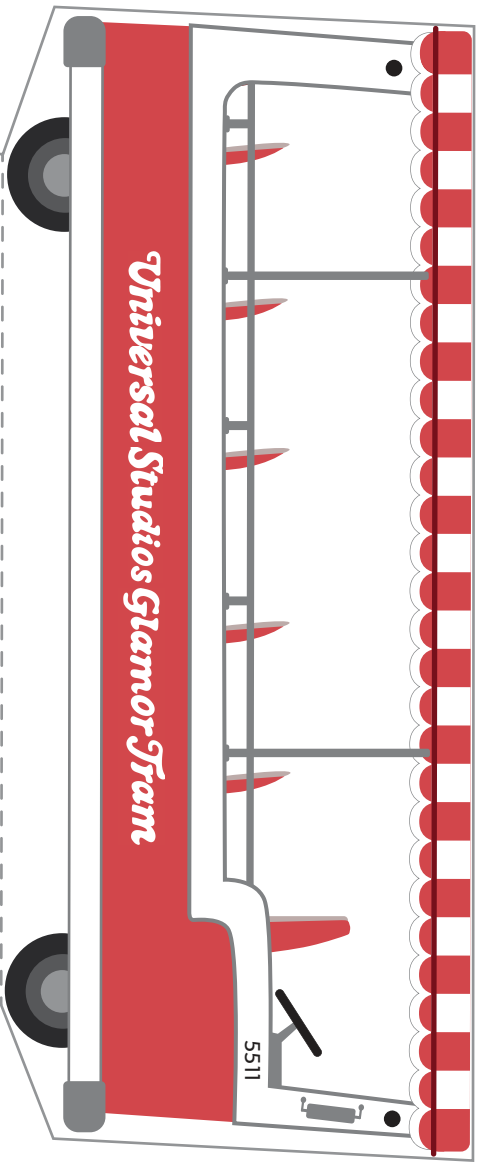
- Adobe Reader to open and print file (Free download from Adobe.com)
- White cardstock (110 pound for best results)
- Color printer
- Scissors & Ruler
- Double-sided tape
- Bone folder (or metal fork)
- 2 1/2 inches of string (Optional)



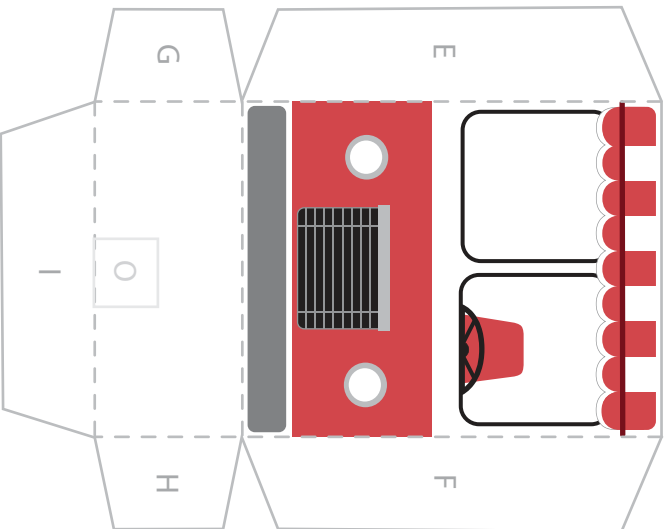
INSTRUCTIONS:

1. Print out pages 1 and 2 on white cardstock.
2. Begin by scoring all dotted lines before cutting to ensure a clean fold on cardstock (Scoring consists of placing a ruler along the fold line and running a bone folder or one tip of a metal fork along the edge to make an indent)
3. Cut out all 4 pieces of tram (cut along grey solid lines)
4. Part 1 Fold rooftop of tram down first followed by tabs A,B,C
5. Part 2 Fold bottom of tram up first followed by tab D, place double-sided tape along bottom tab
6. Align bottoms of Part 1 & Part 2 trams together and press firmly. (*Pro Tip - For added strength place clear tape inside of box on all seams)
7. Part 3 fold all dotted lines and attach double-sided tape to tabs F,H,I
8. Part 3 align tabs F and H to front of tram side Part 1
9. Part 4 fold all dotted lines and attach double-sided tape to tabs J,,N
10. Part 4 align tabs J and L to back of tram side Part 1
11. Place double-sided tape on tabs K,M,E,G
12. Attach and align tabs K & M to back side of Part 2 and press down tab N to bottom of Tram
13. Attach and align tabs E & G to front side of Part 2 and press down tab I to bottom of Tram
14. Fold top of roof of Tram to close box (Place double-sided tape on inside of tab B if you want to keep box closed and secure.
15. (Optional) Attach multiple trams together by taping string to areas O & P leaving about 1 inch between trams.

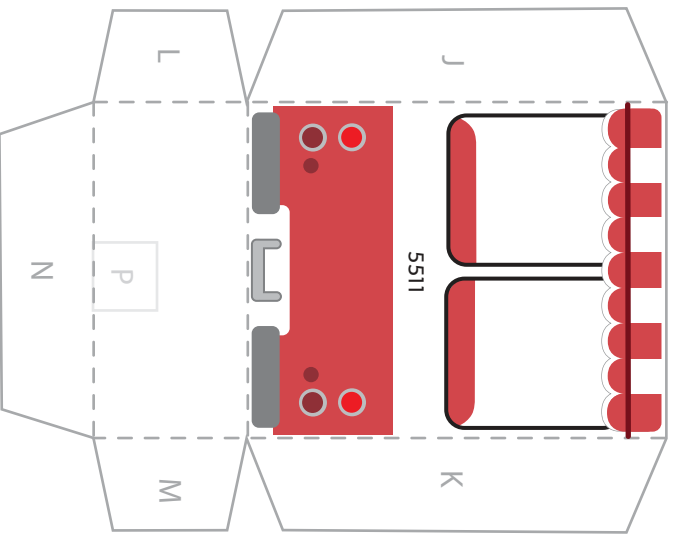




Part 2



Part 3



Part 4

INTERESTING FACT

In 1964, USH introduced the first incarnation of the Studio Tour, back then called the Universal Studio "Glamour" Tram which cost \$2.50 to ride. Parts of the original Glamour Trams are still in use today to shuttle guests to the Park and CityWalk from the Metro pedestrian bridge at the corner of Lankershim and Universal Hollywood Drive.



STUDIO TOUR TRAM PAPER CRAFT BOX

Super Tram 1983 - 2000



Bring Universal Studios Hollywood's, World Famous Studio Tour home to enjoy as a fun craft! Create as a historical keepsake, unique gift box or to make your own fun make believe Studio Tour course at home. Attach multiple trams to complete the look of our World Famous Studio Tour!

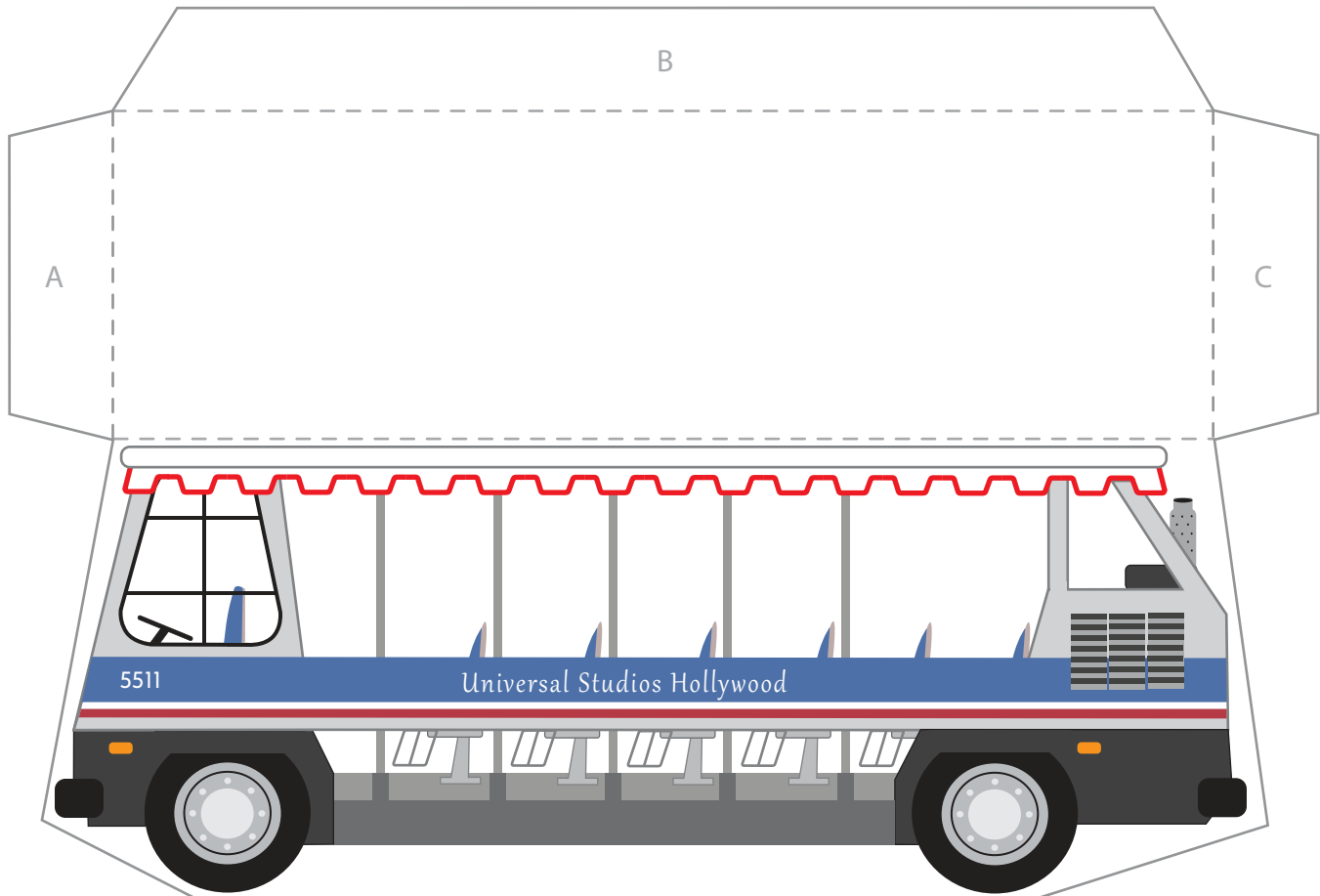
YOU WILL NEED:

- Adobe Reader to open and print file (Free download from Adobe.com)
- White cardstock (110 pound for best results)
- Color printer
- Scissors & Ruler
- Double-sided tape
- Bone folder (or metal fork)
- 2 1/2 inches of string (Optional)



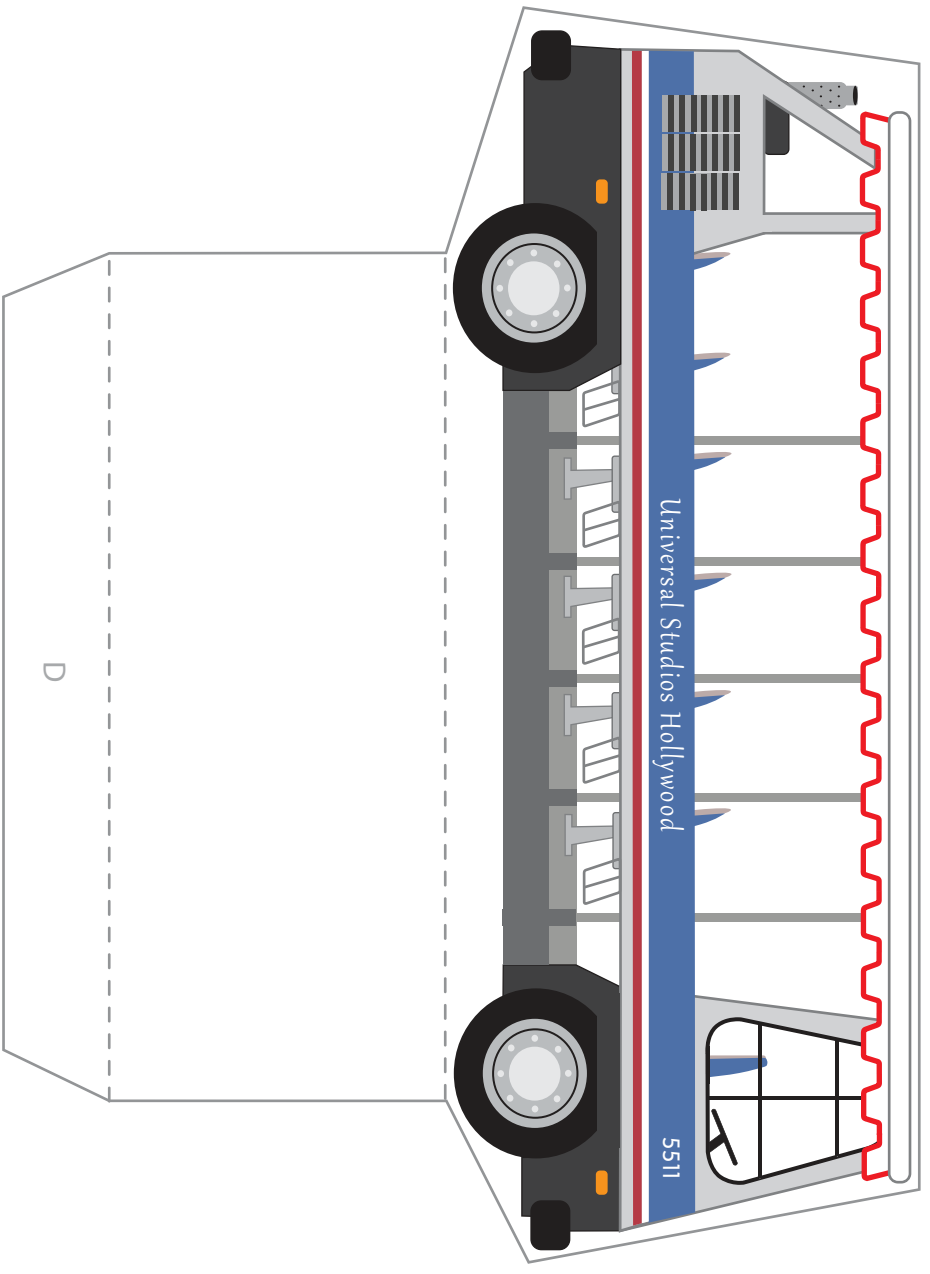
INSTRUCTIONS:

1. Print out pages 1 and 2 on white cardstock.
2. Begin by scoring all dotted lines before cutting to ensure a clean fold on cardstock (Scoring consists of placing a ruler along the fold line and running a bone folder or one tip of a metal fork along the edge to make an indent)
3. Cut out all 4 pieces of tram (cut along grey solid lines)
4. Part 1 Fold rooftop of tram down first followed by tabs A,B,C
5. Part 2 Fold bottom of tram up first followed by tab D, place double-sided tape along bottom tab
6. Align bottoms of Part 1 & Part 2 trams together and press firmly. (*Pro Tip - For added strength place clear tape inside of box on all seams)
7. Part 3 fold all dotted lines and attach double-sided tape to tabs F,H,I
8. Part 3 align tabs F and H to front of tram side Part 1
9. Part 4 fold all dotted lines and attach double-sided tape to tabs J,
10. Part 4 align tabs J and L to back of tram side Part 1
11. Place double-sided tape on tabs K,M,E,G
12. Attach and align tabs K & M to back side of Part 2 and press down tab N to bottom of Tram
13. Attach and align tabs E & G to front side of Part 2 and press down tab I to bottom of Tram
14. Fold top of roof of Tram to close box (Place double-sided tape on inside of tab B if you want to keep box closed and secure.
15. (Optional) Attach multiple trams together by taping string to areas O & P leaving about 1 inch between trams.

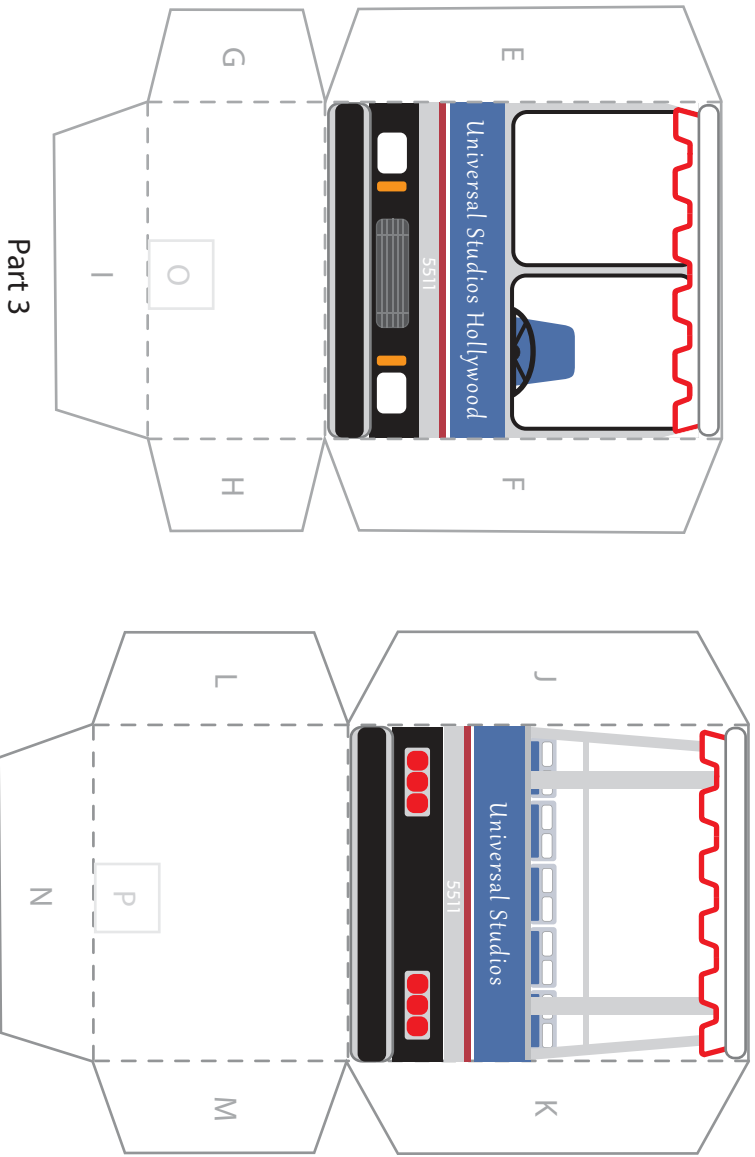


Part 1

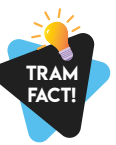
Designed By Julie Carlson



Part 2



Part 3



INTERESTING FACT

In 1983, The Super Tram was the world's largest free-moving gas-driven road vehicle. The Super Trams were originally signwritten "Universal Studio Tour." Around 1990, when Universal Studios Florida opened, the trams were repainted with "Universal Studios Hollywood"

STUDIO TOUR TRAM PAPER CRAFT BOX

Studio Tram 2000 - Present



Bring Universal Studios Hollywood's, World Famous Studio Tour home to enjoy as a fun craft! Create as a historical keepsake, unique gift box or to make your own fun make believe Studio Tour course at home. Attach multiple trams to complete the look of our World Famous Studio Tour!

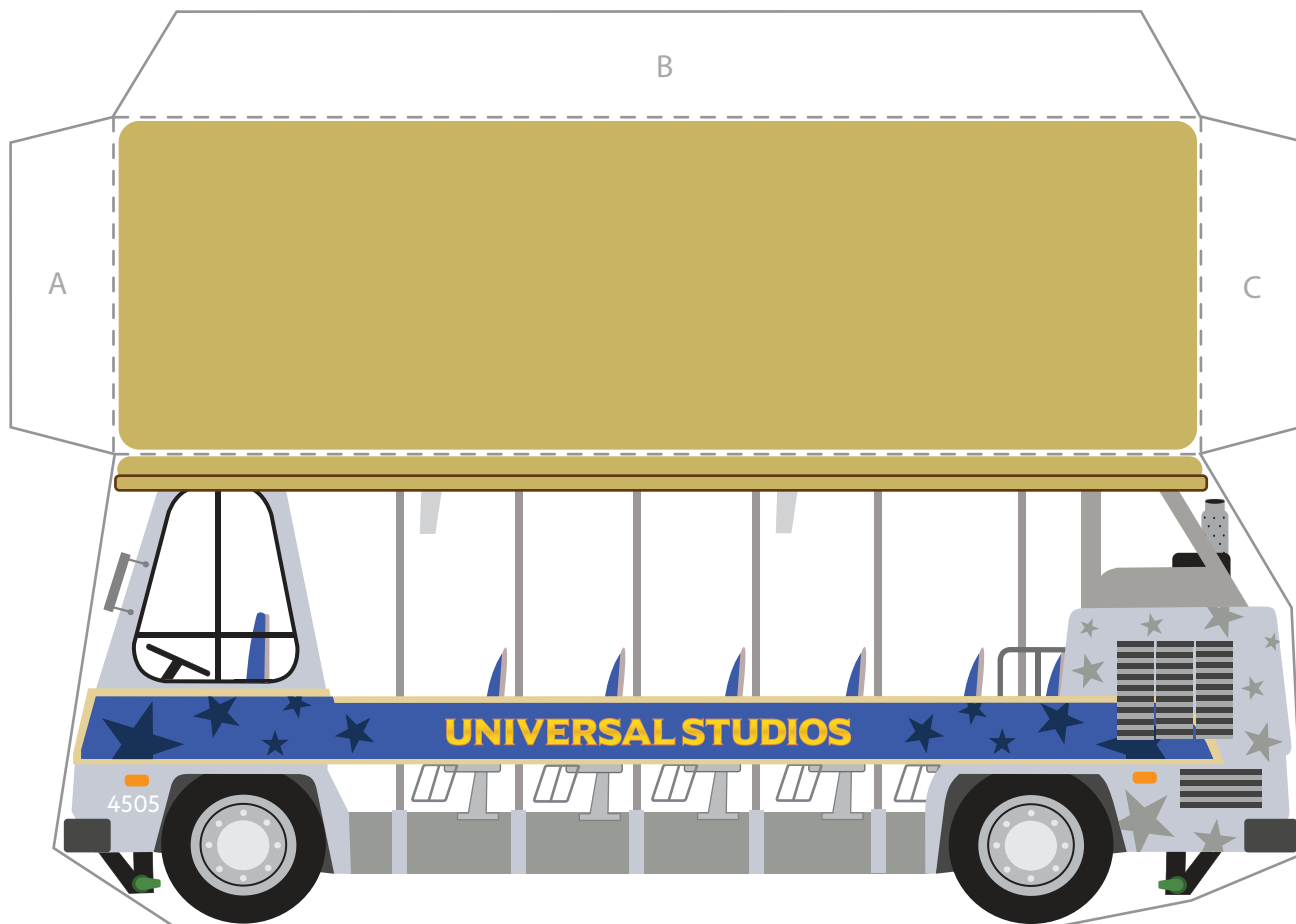
YOU WILL NEED:

- Adobe Reader to open and print file (Free download from Adobe.com)
- White cardstock (110 pound for best results)
- Color printer
- Scissors & Ruler
- Double-sided tape
- Bone folder (or metal fork)
- 2 1/2 inches of string (Optional)



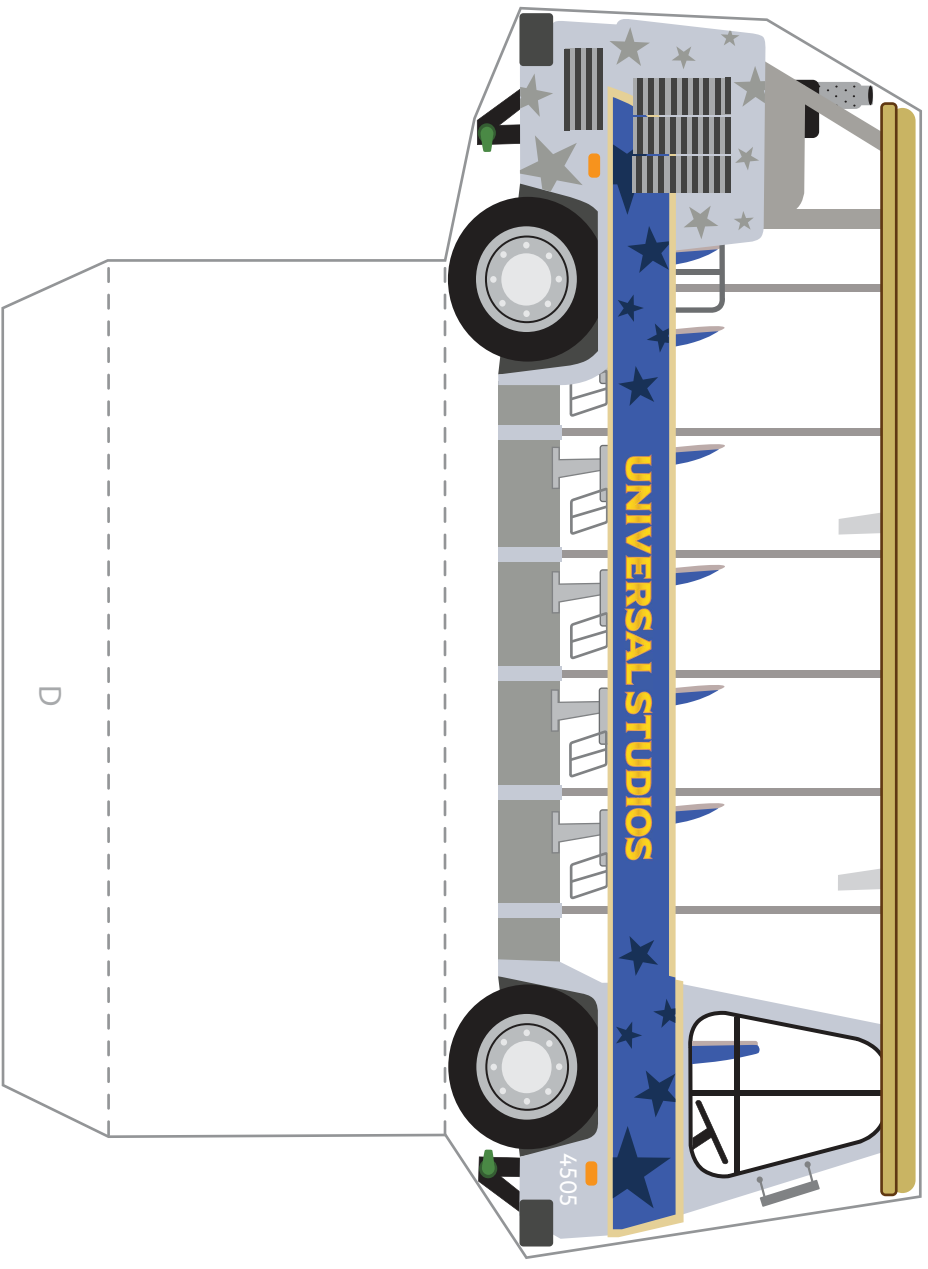
INSTRUCTIONS:

1. Print out pages 1 and 2 on white cardstock.
2. Begin by scoring all dotted lines before cutting to ensure a clean fold on cardstock (Scoring consists of placing a ruler along the fold line and running a bone folder or one tip of a metal fork along the edge to make an indent)
3. Cut out all 4 pieces of tram (cut along grey solid lines)
4. Part 1 Fold rooftop of tram down first followed by tabs A,B,C
5. Part 2 Fold bottom of tram up first followed by tab D, place double-sided tape along bottom tab
6. Align bottoms of Part 1 & Part 2 trams together and press firmly. (*Pro Tip - For added strength place clear tape inside of box on all seams)
7. Part 3 fold all dotted lines and attach double-sided tape to tabs F,H,I
8. Part 3 align tabs F and H to front of tram side Part 1
9. Part 4 fold all dotted lines and attach double-sided tape to tabs J,L,N,P,R
10. Part 4 align tabs J,L,N,P to back of tram side Part 1
11. Part 4 place double-sided tape on tabs K,M,O,Q and align to back side of Part 2 and press down on tab R
12. Part 3 place double-sided tape on tabs E and G and align to front side of Part 2 and press down on tab I
13. Fold top of roof of Tram to close box (Place double-sided tape on inside of tab B if you want to keep box closed and secure.
14. (Optional) Attach multiple trams together by taping string to areas O & P leaving about 1 inch between trams.

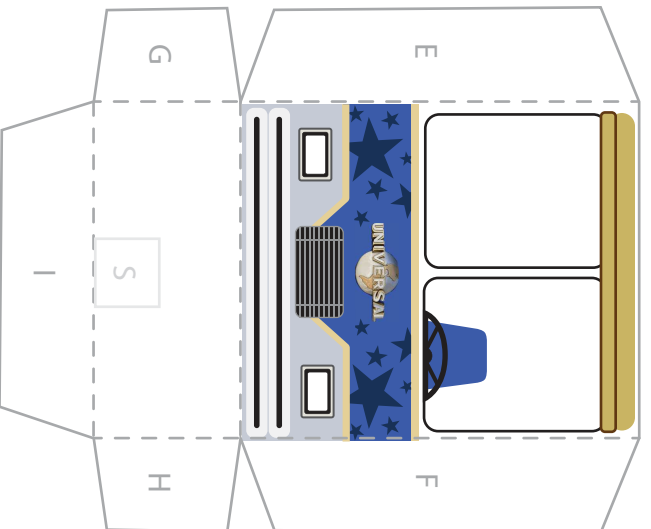


Part 1

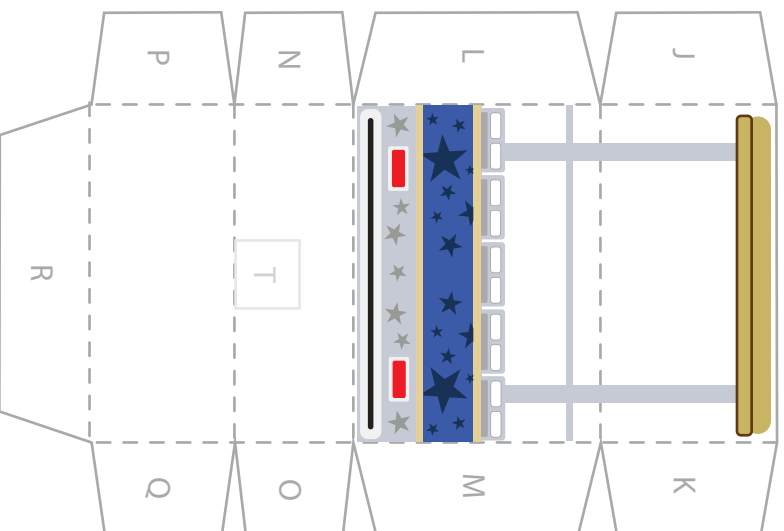
Designed By Julie Carlson



Part 2



Part 3



Part 4

INTERESTING FACT

As part of Universal's "Green is Universal" initiative, Universal Studios Hollywood has added an all-new electric tram for its Studio Tour that is much quieter and more eco-friendly.

